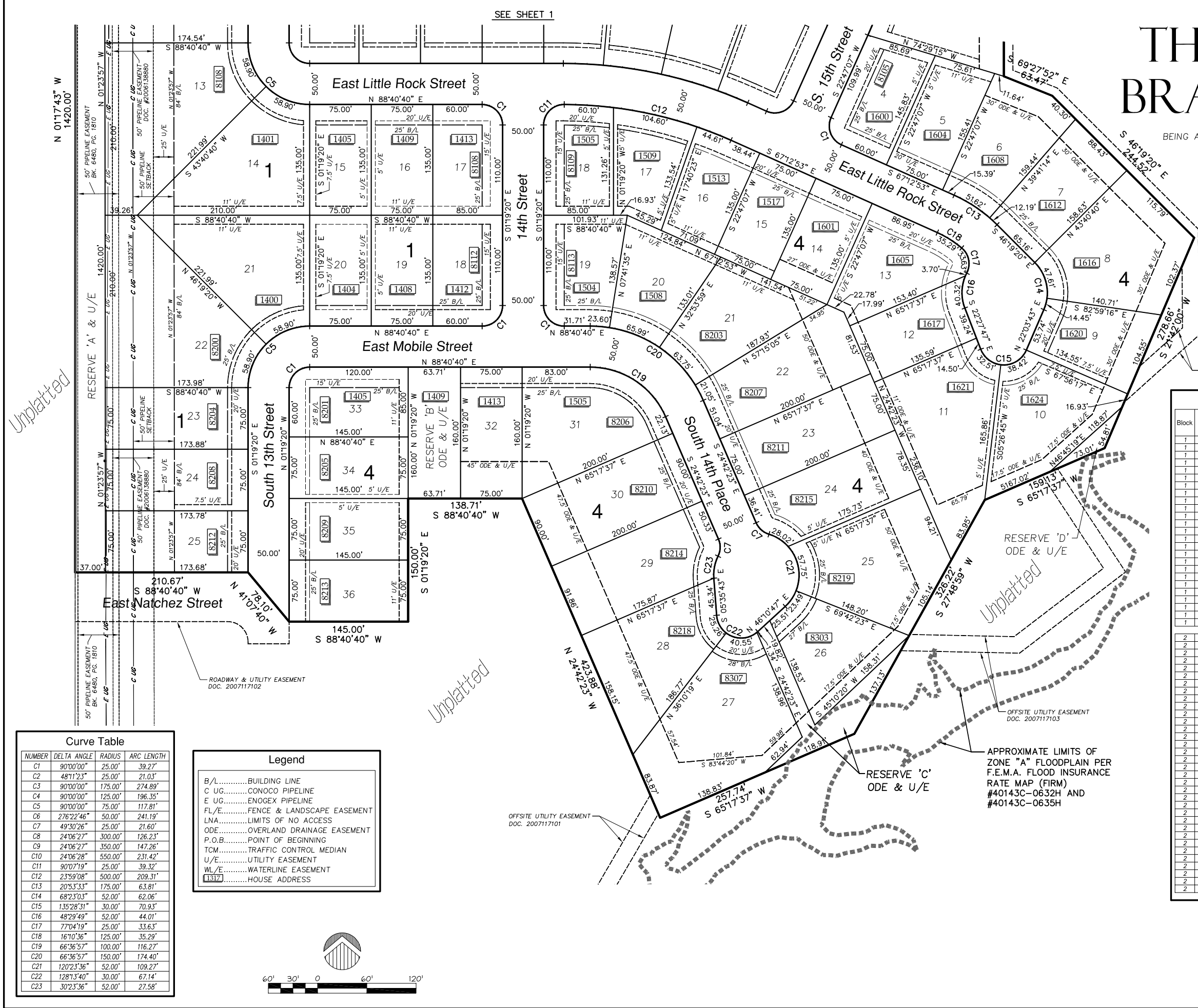


# THE RESERVE AT BRADFORD PARK

AN ADDITION TO THE CITY OF BROKEN ARROW  
BEING A SUBDIVISION OF THE N/2 OF SECTION 12, TOWNSHIP 17 NORTH,  
RANGE 14 EAST, TULSA COUNTY, OKLAHOMA

SEE SHEET 1



Unplatted

Unplatted

Unplatted

Unplatted

Backflow Preventer Valve Table

Block	Lot	Pad Elevation	Finish Floor Elevation	Upstream Manhole	Top of Rim Elevation	BFP Required
1	1	640.25	641.58	E7	650.00	YES
1	2	637.25	638.58	E7	650.00	YES
1	3	634.25	635.58	E6	638.30	YES
1	4	630.25	631.58	E6	638.30	YES
1	5	627.25	628.58	E4	623.10	---
1	6	625.25	626.58	E4	623.10	---
1	7	622.25	623.58	E3	625.60	---
1	8	628.25	629.58	E3	625.60	---
1	9	630.25	631.58	E2	628.80	---
1	10	630.25	631.58	E2	628.80	---
1	11	632.25	633.58	I1	631.30	---
1	12	634.25	635.58	I1	631.30	---
1	13	637.25	638.58	I2	636.80	---
1	14	642.25	643.58	I2	636.80	---
1	15	646.25	647.58	J1	645.00	---
1	16	650.25	651.58	J2	650.00	---
1	17	654.25	655.58	J2	650.00	---
1	18	644.25	645.58	J2	650.00	YES
1	19	643.25	644.58	J2	650.00	YES
1	20	642.25	643.58	J1	645.00	YES
1	21	643.25	644.58	I3	639.50	---
1	22	643.25	644.58	I3	639.50	---
1	23	645.25	646.58	I4	640.00	---
1	24	644.25	645.58	I4	640.00	---
1	25	645.25	646.58	I5	646.20	YES
2	1	632.25	633.58	H3	635.20	YES
2	2	636.25	637.58	H4	649.00	YES
2	3	640.25	641.58	H4	649.00	YES
2	4	644.25	645.58	H4	649.00	YES
2	5	648.25	649.58	H5	657.40	YES
2	6	652.25	653.58	H5	657.40	YES
2	7	656.25	657.58	H5	657.40	YES
2	8	660.25	661.58	H5	657.40	---
2	9	656.25	657.58	H5	657.40	YES
2	10	655.25	656.58	F7	655.30	---
2	11	653.25	654.58	F7	655.30	YES
2	12	653.25	654.58	F7	655.30	YES
2	13	652.25	653.58	F6	652.60	YES
2	14	651.25	652.58	F1	652.00	YES
2	15	652.25	653.58	F5	652.50	---
2	16	653.25	654.58	F4	652.90	---
2	17	653.25	654.58	F4	652.90	---
2	18	652.25	653.58	F4	652.90	YES
2	19	648.25	649.58	F3	647.00	---
2	20	645.25	646.58	F3	647.00	YES
2	21	642.25	643.58	F3	647.00	YES
2	22	637.25	638.58	F3	647.00	YES
2	23	640.25	641.58	F3	647.00	YES
2	24	644.25	645.58	F3	647.00	YES
2	25	647.25	648.58	F4	652.90	YES
2	26	650.25	651.58	F4	652.90	YES
2	27	653.25	654.58	F4	652.90	---
2	28	655.25	656.58	F7	655.30	---
2	29	652.25	653.58	H5	657.40	YES
2	30	649.25	650.58	H4	649.00	---
2	31	646.25	647.58	H4	649.00	---
2	32	642.25	643.58	H4	649.00	YES
2	33	639.25	640.58	H4	649.00	YES
2	34	635.25	636.58	H3	635.20	---

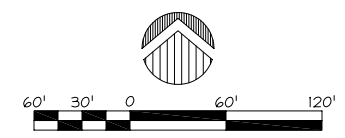
IF THE ACTUAL FINISH FLOOR ELEVATION IS LOWER THAN ONE (1) FOOT ABOVE THE TOP OF RIM ELEVATION OF THE UPSTREAM MANHOLE, IT SHALL BE THE BUILDER'S RESPONSIBILITY TO INSTALL A BACKFLOW PREVENTER VALVE NEAR THE BUILDING ACCORDING TO BROKEN ARROW ORDINANCE NO. 1777, SECTION 24-100, ADOPTED MAY 17, 1993.

Curve Table

NUMBER	DELTA ANGLE	RADIUS	ARC LENGTH
C1	90°00'00"	25.00'	39.27'
C2	48°11'23"	25.00'	21.03'
C3	90°00'00"	175.00'	274.89'
C4	90°00'00"	125.00'	196.35'
C5	90°00'00"	75.00'	117.81'
C6	276°22'46"	50.00'	241.19'
C7	49°30'26"	25.00'	21.60'
C8	24°06'27"	300.00'	126.23'
C9	24°06'27"	350.00'	147.26'
C10	24°06'28"	550.00'	231.42'
C11	90°07'19"	25.00'	39.32'
C12	23°59'08"	500.00'	209.31'
C13	20°53'33"	175.00'	63.81'
C14	68°23'03"	52.00'	62.06'
C15	135°28'31"	30.00'	70.93'
C16	48°29'49"	52.00'	44.01'
C17	77°04'19"	25.00'	33.63'
C18	16°10'36"	125.00'	35.29'
C19	66°36'57"	100.00'	116.27'
C20	66°36'57"	150.00'	174.40'
C21	120°23'36"	52.00'	109.27'
C22	128°13'40"	30.00'	67.14'
C23	30°23'36"	52.00'	27.58'

**Legend**

- B/L.....BUILDING LINE
- C UG.....CONOCO PIPELINE
- E UG.....ENOGEX PIPELINE
- FL/E.....FENCE & LANDSCAPE EASEMENT
- LNA.....LIMITS OF NO ACCESS
- ODE.....OVERLAND DRAINAGE EASEMENT
- P.O.B.....POINT OF BEGINNING
- TCM.....TRAFFIC CONTROL MEDIAN
- U/E.....UTILITY EASEMENT
- WL/E.....WATERLINE EASEMENT
- 1317.....HOUSE ADDRESS



APPROXIMATE LIMITS OF ZONE "A" FLOODPLAIN PER F.E.M.A. FLOOD INSURANCE RATE MAP (FIRM) #40143C-0632H AND #40143C-0635H

APPROVED \_\_\_\_\_ by the City Council of the City of Broken Arrow Oklahoma.

Mayor \_\_\_\_\_

Attest: City Clerk \_\_\_\_\_